

PERSONA



INFO@ESTUDIOPERSONA.COM



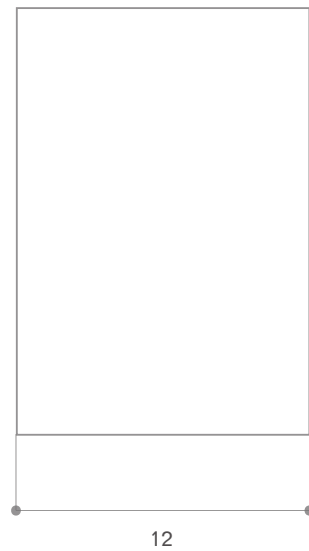
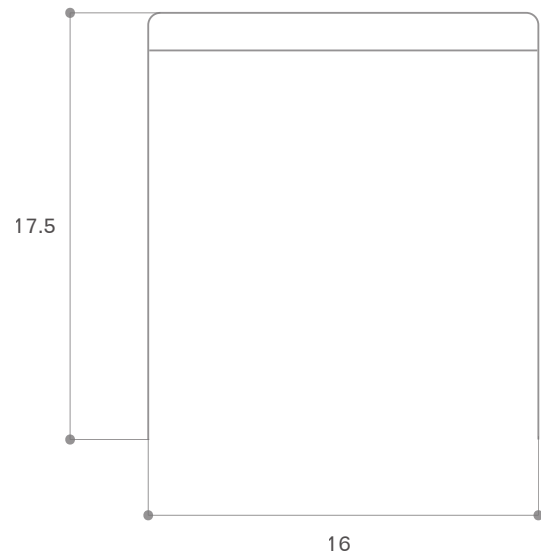
WWW.ESTUDIOPERSONA.COM



Beige Suede
Aluminum



Rust Suede
Aluminum



SEGMENT STOOL

The Segment Stool explores the idea of breaking down a singular form into multiple components. Each piece is designed to relate to one another, creating a cohesive yet segmented structure. This collection invites a deeper exploration of how individual segments can come together to form a unified and balanced whole. Customizations available upon request. Available in COL (Customer's Own Leather).

PRODUCT SPECIFICATIONS

MATERIALS	Metal Suede
DIMENSIONS	16 W 12 D 17.5 H in 40.50 W 40.50 D 44.50 H cm
WEIGHT	13 lbs 6 kg
FABRIC REQUIREMENTS	5 x 2 ft Swatch required for approval
SHIPPING	Worldwide shipping Quotes upon request

Handmade in Los Angeles
Every effort is made to ensure an accurate representation of product colors, finishes, and dimensions; however, due to the handmade nature of this product, slight variations may occur. Color swatches are provided for reference only. Estudio Persona cannot guarantee an exact color match for any product finishes. All designs are protected under copyright law. Estudio Persona holds the exclusive manufacturing and distribution rights worldwide. Unauthorized copying will be prosecuted.

MATERIALS AND FINISHES

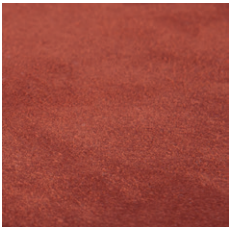


Buffed Aluminum

Please note:
All of our metal products have a clearcoat for further protection.



Beige Suede



Rust Suede

Please note:
Natural materials will come with peculiarities and develop a characteristic patina over time.

CLEANING INSTRUCTIONS

Buffed Aluminum
Carefully clean the surface using a soft, lint-free cloth lightly dampened with clean water to remove any marks. Once cleaned, promptly dry the metal with a soft cloth to avoid streaking or surface damage.

Suede
If the suede item presents stains or dirt, remove any loose debris using a dry, soft-bristled brush soft bristled brush to remove loose debris from the surface of the leather. Avoid using water directly on suede, as it can stain or harden the texture.